


LUJAINE RESIDENCE



GADALLA

— HOMES LTD —



A faint, light gray architectural floor plan of a multi-unit residential building serves as the background. The plan shows various rooms including kitchens with stoves and sinks, bathrooms with tubs and toilets, bedrooms, and common areas. A wheelchair accessibility symbol is visible in one of the units. The overall layout is complex, with multiple corridors and room divisions.

BUILDING DREAMS, ONE BRICK AT A TIME

OUR STORY

The Gadalla family's journey began in 2017 when they arrived in the heart of Cyprus—Larnaca City—with a vision to make a mark in the world of real estate. Armed with years of experience and deep roots in civil engineering, the Gadalla family didn't just want to build structures; they wanted to build homes, communities, and lasting legacies.

With a family of engineers at the helm, our approach to real estate development blends technical expertise with a passion for design. Every apartment and villa we create is more than just a living space—it's a modern sanctuary. We specialize in crafting luxurious, high-quality homes with contemporary designs that reflect the elegance and beauty of Cyprus itself.

At Gadalla, we understand that time is precious. That's why we're committed to delivering our projects on time, without ever compromising on the details. From groundbreaking to handover, our clients receive full support at every step. We believe in transparency, trust, and building relationships as strong as the foundations we lay.

For us, it's not just about construction—it's about creating spaces where life unfolds, and memories are made. Welcome to Gadalla, where precision engineering meets the art of luxury living.



CURRENT DEVELOPMENTS



LUJAIN RESIDENCE

NADA RESIDENCE



LUJAIN RESIDENCE

PROJECT DESCRIPTION

A sophisticated residential development designed to offer a lifestyle of comfort. It includes 7 spacious, high-end apartments with a variety of one-, two-, and three-bedroom units.

Built on Experience:

Past Projects That Define Us



JULY 2020

DECEMBER 2021

NOVEMBER 2021

MAY 2023

JUNE 2023

PROJECT LOCATION



Finikoudes Beach



Mackenzie Beach



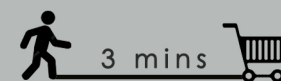
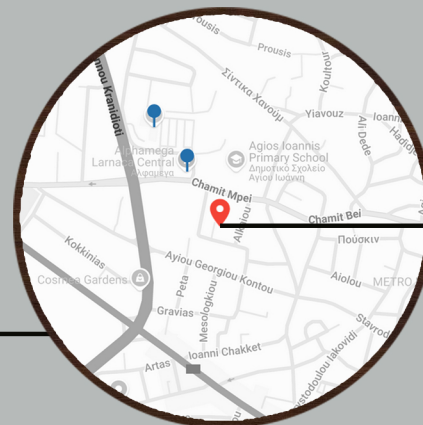
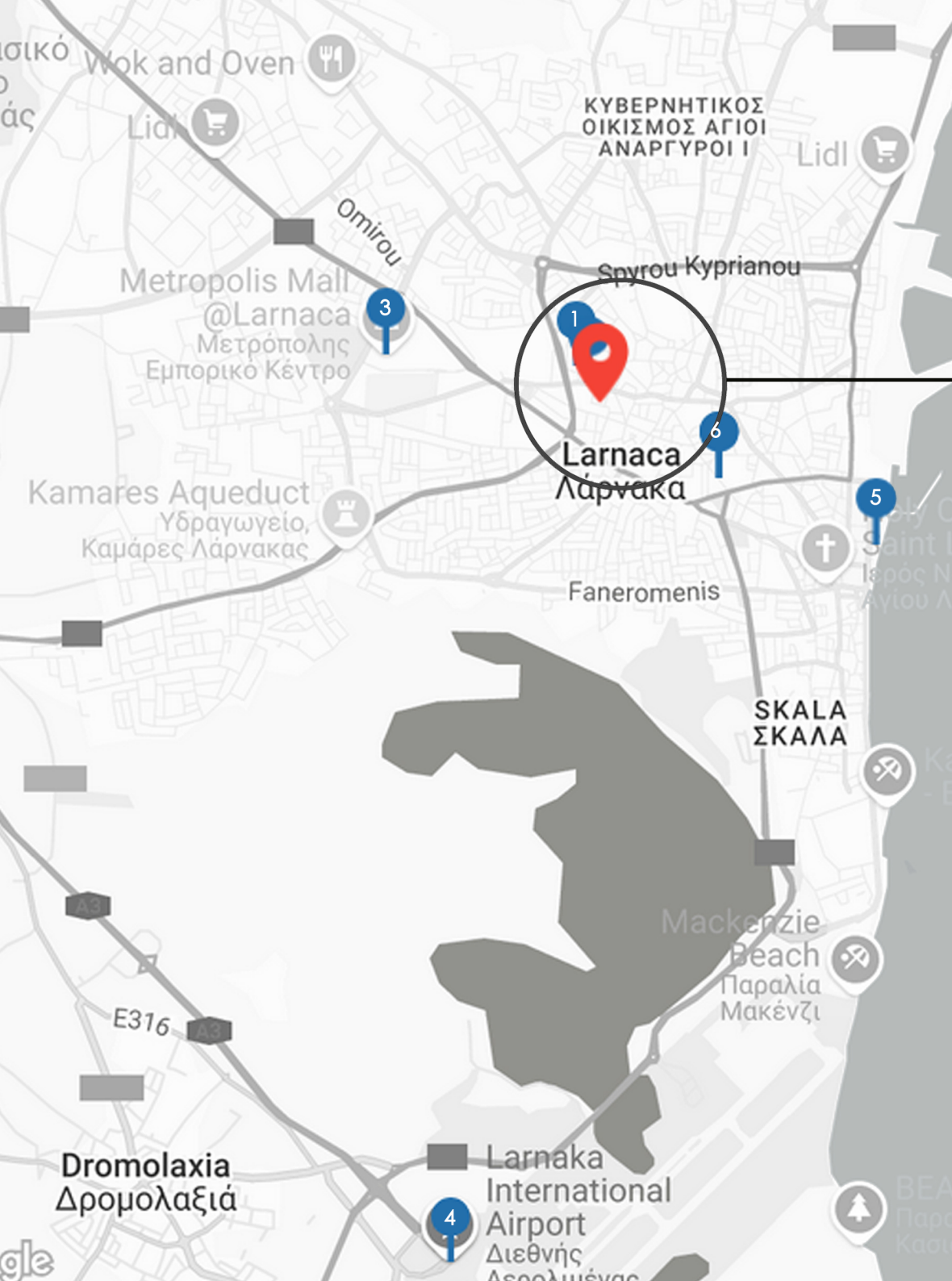
American Academy
Larnaca



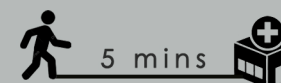
LUJAINÉ RESIDENCE



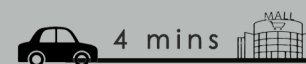
SURROUNDINGS



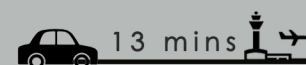
Alphamega
Larnaca Central



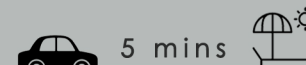
Saint Rafael
Private Hospital



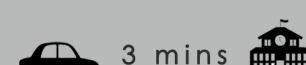
Metropolis Mall
of Larnaca



Larnaka Airport



Finikoudes Beach

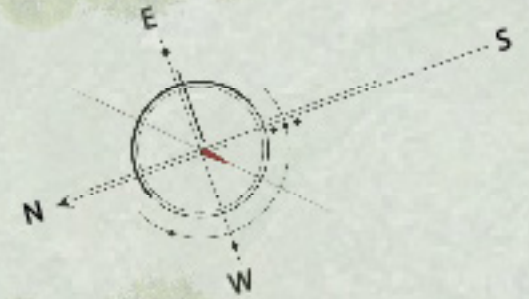


American Academy
Larnaca

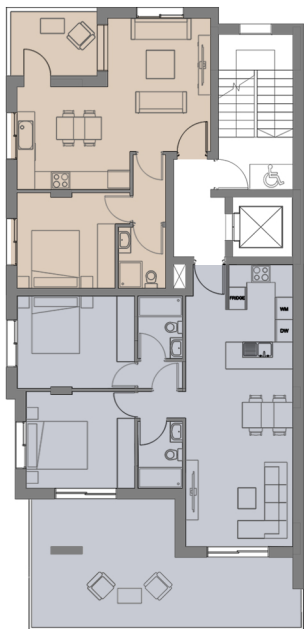


GROUND FLOOR PLAN

- 1. MAIN ENTRANCE
- 2. LOBBY AREA
- 3. STORAGE ROOMS
- 5. PARKING LOTS
- 6. CAR ENTRANCE



TYPICAL FLOOR PLAN



APARTMENT 1

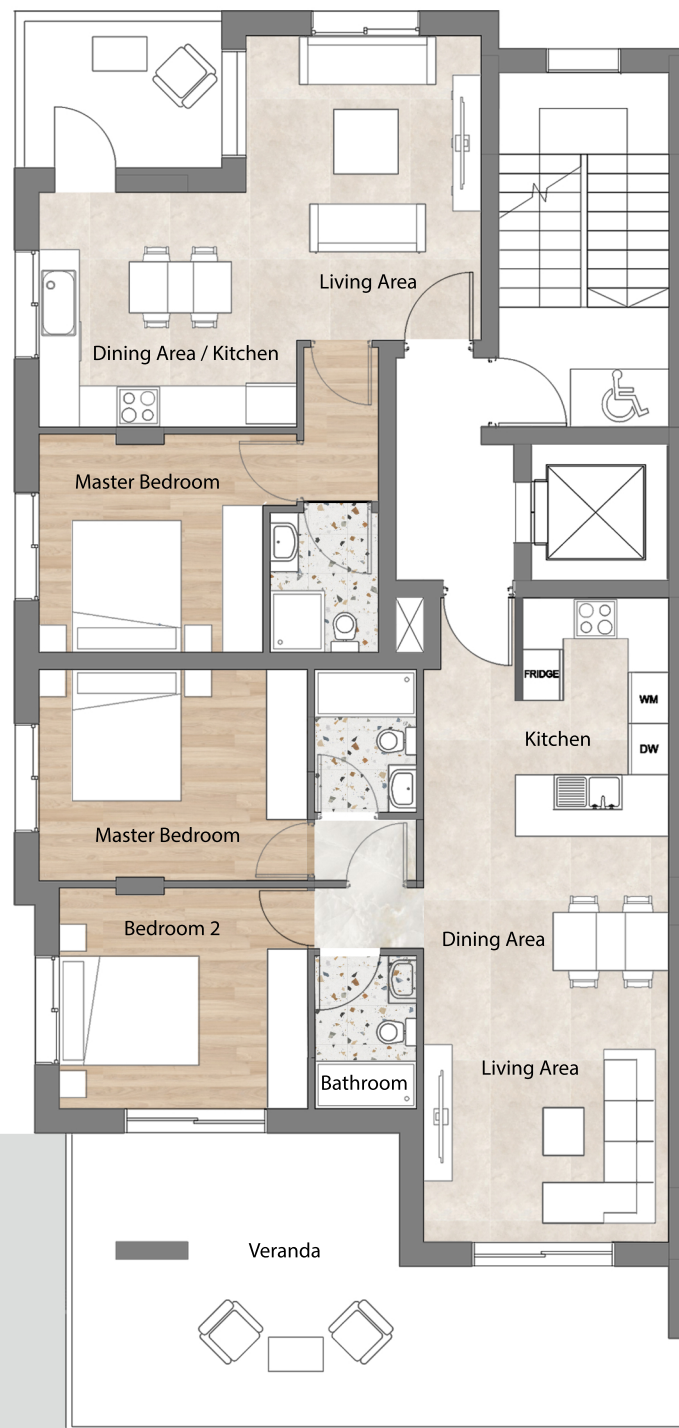
Total Area= 52 Sq.m.

Entrance Foyer	2.70 x 2.20
Living Area	3.45 x 2.30
Dining Area/Kitchen	3.80 x 3.45
Master Bedroom	3.30 x 3.20
Bathroom	2.05 x 1.60
Veranda	2.90 x 2.15

APARTMENT 2

Total Area= 80 Sq.m.

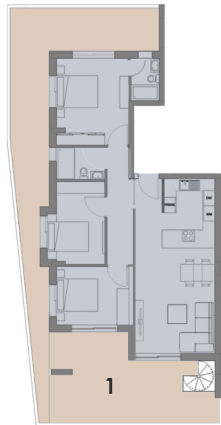
Entrance Foyer	3.50 x 1.35
Kitchen	3.50 x 2.15
Dining Area/Living	5.95 x 3.60
Master Bedroom	3.95 x 3.10
Bedroom 2	3.65 x 3.25
Bathroom	2.25 x 1.50
Veranda	30.50m2



Section Key



FOURTH FLOOR PLAN/ ROOF



APARTMENT 3

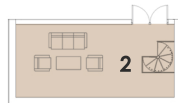
Total Area= 105 Sq.m.

1. Covered Veranda

Area= 64 sq.m.

2. Uncovered Veranda

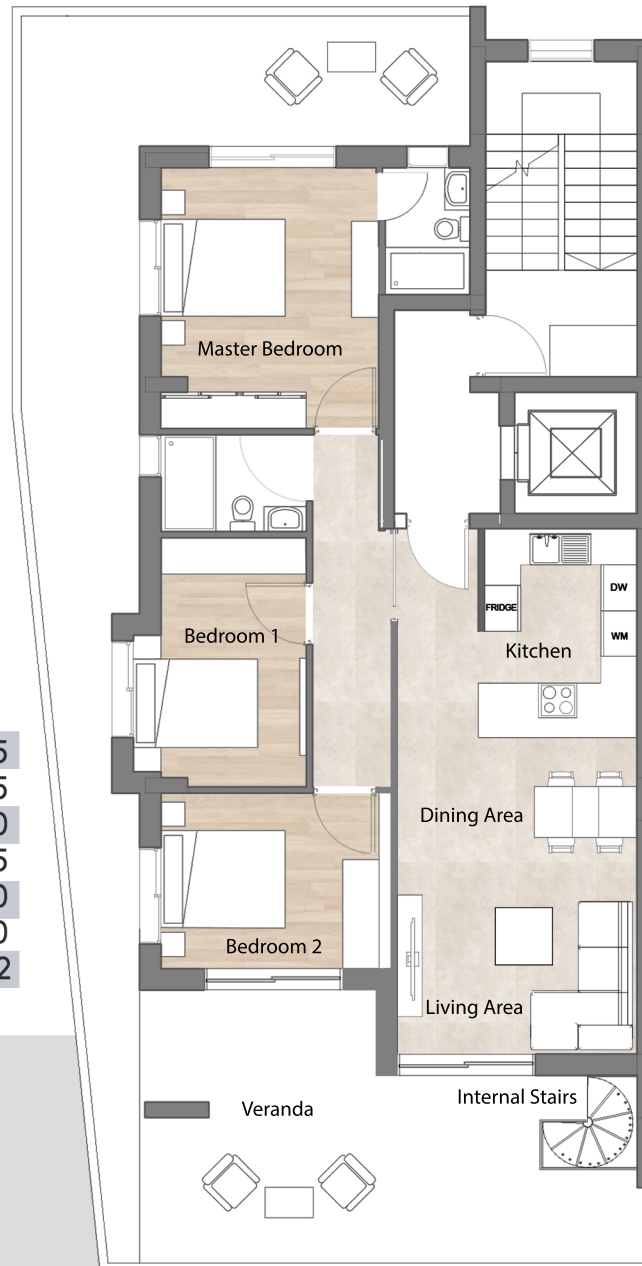
7.85 x 3.60



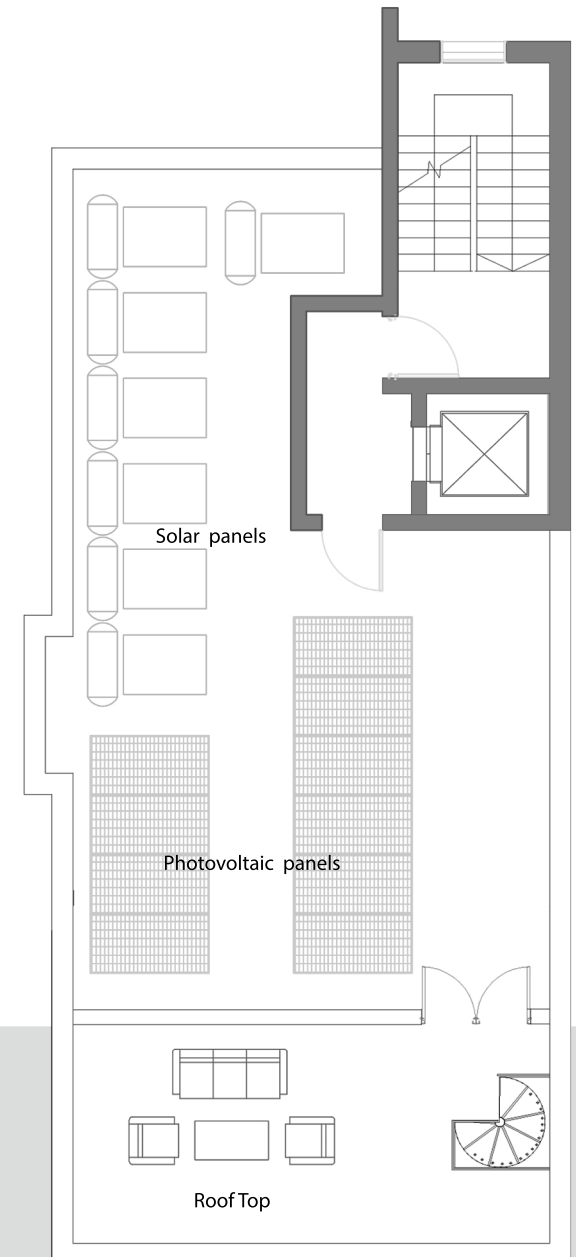
Roof Garden

Kitchen	3.50 x 2.25
Dining Area/Living	5.20 x 3.95
Master Bedroom	4.30 x 3.60
Bedroom 1	4.10 x 2.85
Bedroom 2	3.75 x 2.90
Bathroom	2.40 x 1.60
Veranda	Area = 64 m2

Section Key



Fourth Floor Plan



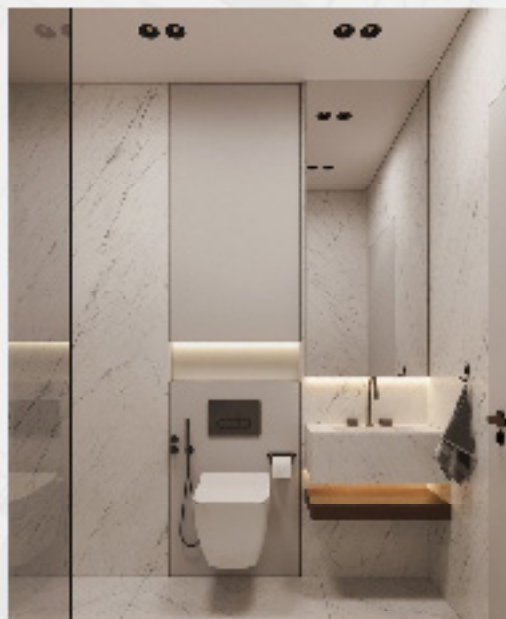
Roof Floor Plan



INTERIOR
DESIGNS









GADALLA
— HOMES LTD —



700-8888-6



945-9999-0



info@gadallahomes.com



www.gadallahomes.com



28 Leontiou machaira street, shop no. 101, Larnaca, 7102, Cyprus