

LUXURY
LIVING



MARIAM RESIDENCE



GADALLA
DEVELOPERS

IN ASSOCIATION WITH
IPC INTERNATIONAL



LUXURY
LIVING



MARIAM RESIDENCE

GADALLA DEVELOPERS in association with IPC International are proud to present its new residential project “**MARIAM RESIDENCE**” located in the heart of Larnaca City.

MARIAM RESIDENCE will comprise of 12 x 2 bedroom luxury apartments on the first 4 floors and 1 x 3 bedroom luxury penthouse apartment on the 5th floor with an individual private and luxury roof-garden with amazing views of the City Centre with Sea View.

MARIAM RESIDENCE is situated just 200 meters to the main shopping centre and 400 meters to Finikoudes promenade and 150 meters to the American Academy private school.

All energy efficient high end specification luxury apartments are designed with elegance to provide luxury living in the City Centre including en-suite shower rooms and built in wardrobes. For those who prefer the top-end luxury, they can select to purchase a large 3 bedroom luxury penthouse apartment on the 5th floor which provides luxury living to its limits.

MARIAM RESIDENCE has been fully designed and studied by a firm of leading architects, engineers and Interior Designers. The modern design of the exterior and Internal of the building makes excellent use of the features like, high pressured laminated wood, exterior facial marble, unique glass balconies and smart design layout of the living areas designed to offer optional space, privacy and also views of the City Centre downtown.

The project is expected to be completed by February 2020.

Property distance from:

Center of town **200 meters** Beach **400 meters** Airport **8 minutes**
Nicosia **35 minutes** Ayia Napa **30 minutes** Limassol **40 minutes**

CYPRUS



PROPERTY DESCRIPTION

LUXURY
LIVING



EXTERIOR DESIGN



LUXURY
LIVING



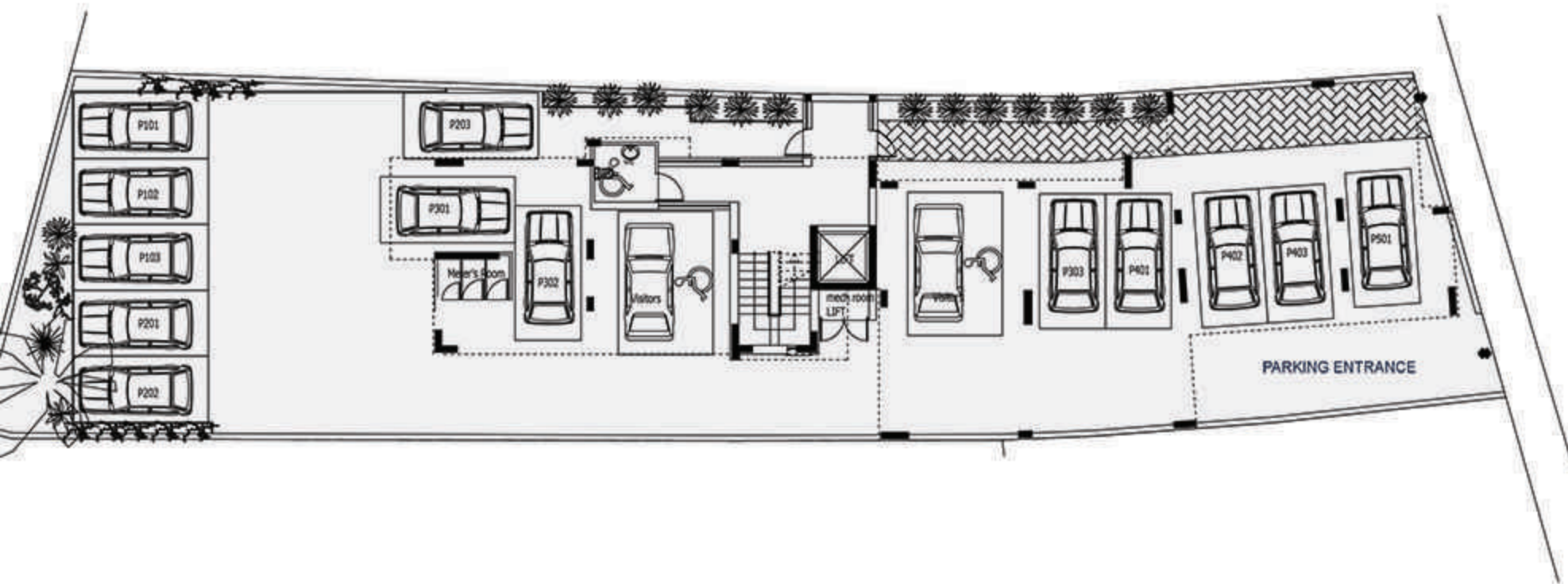


INTERIOR DESIGN

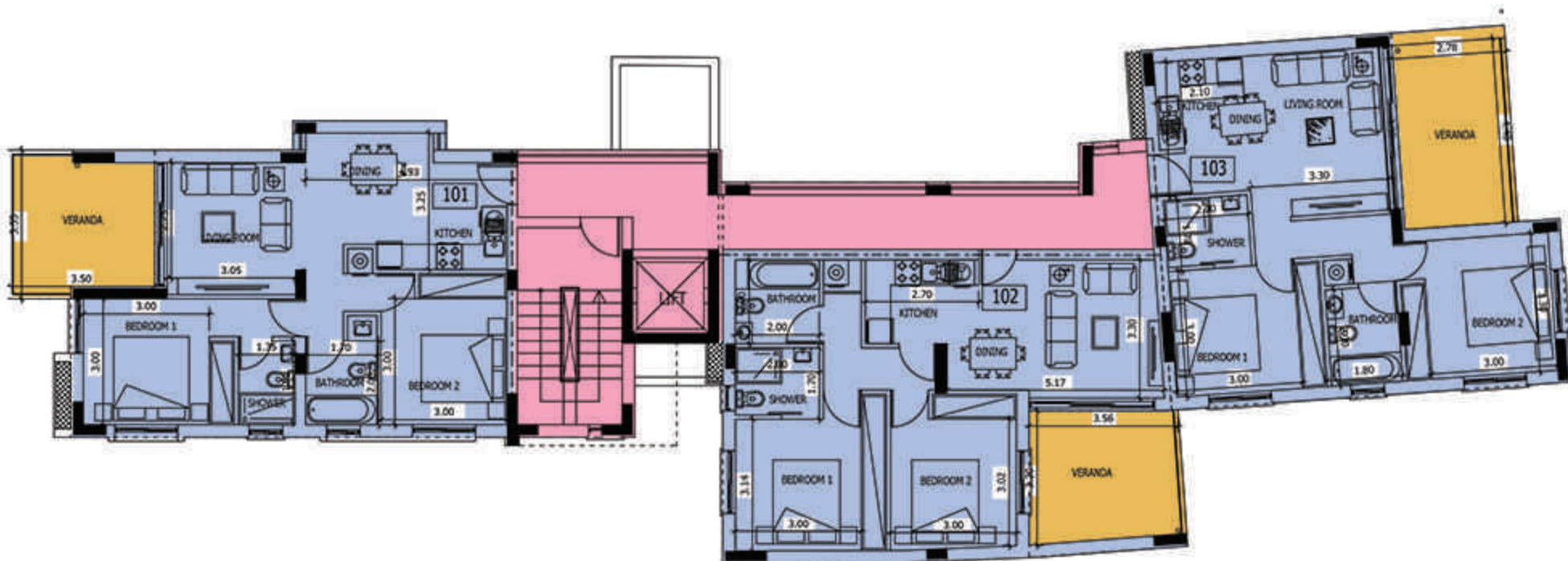
LUXURY
LIVING





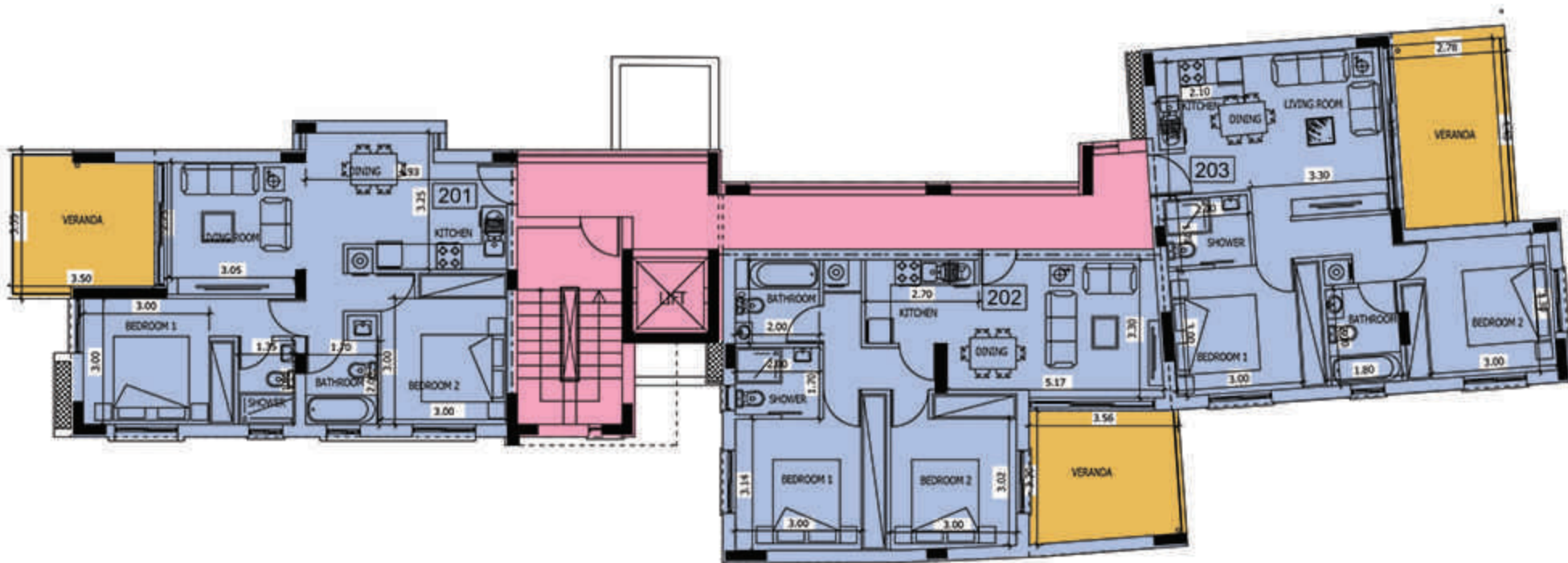


GROUND FLOOR



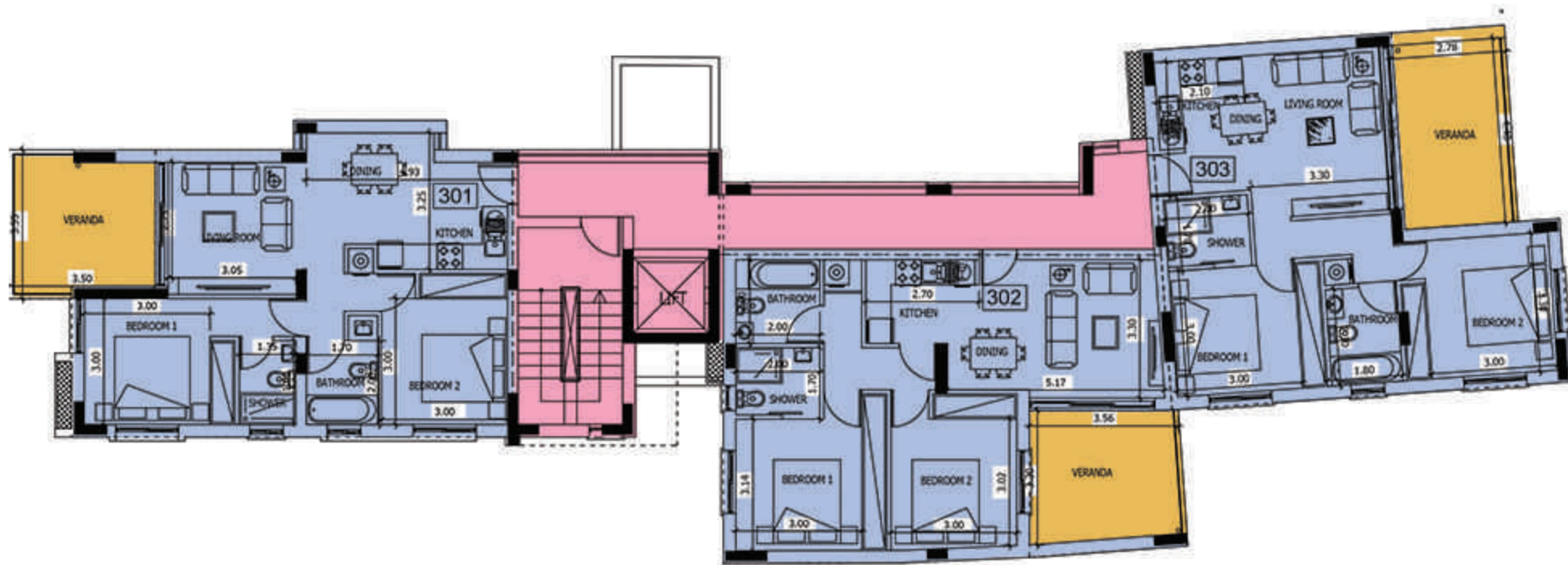
Apartment	No of bedrooms	Area m ²	Covered verandas m ²	Uncovered verandas m ²	Storage m ²	Total m ²
101	2	68	12	-	2	82
102	2	65	12	-	2	79
103	2	65	13	-	2	80

FIRST FLOOR



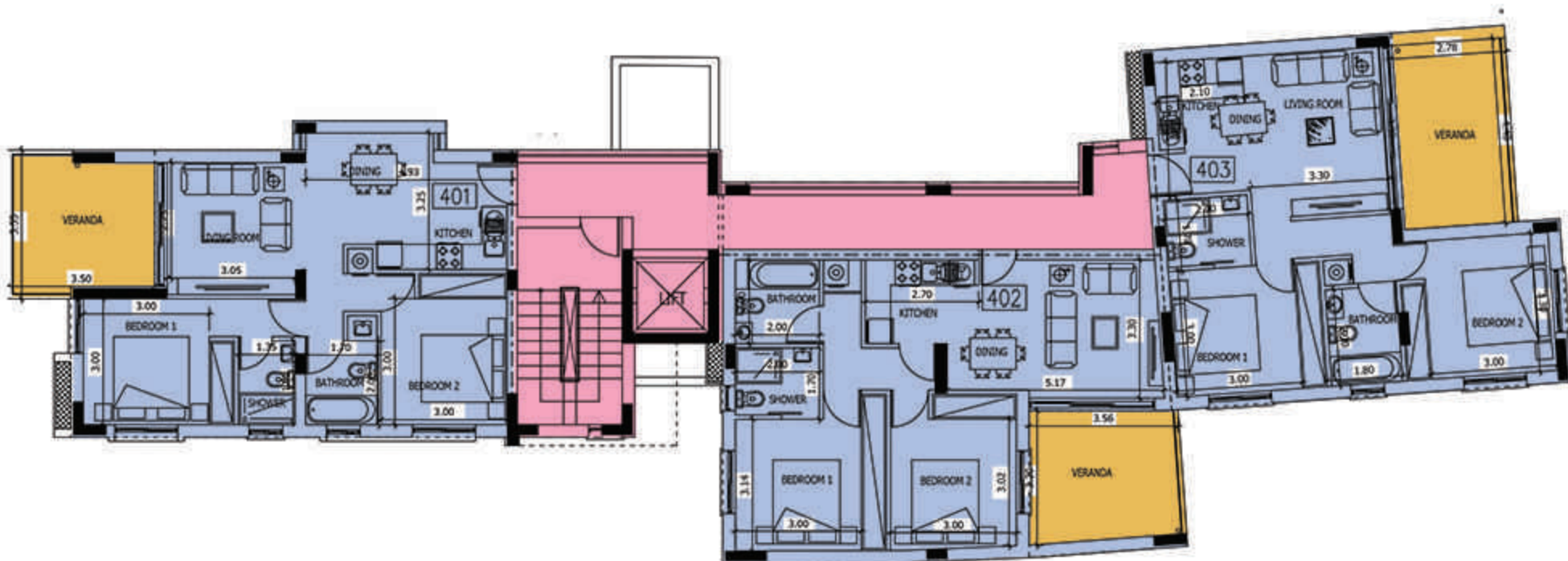
Apartment	No of bedrooms	Area m ²	Covered verandas m ²	Uncovered verandas m ²	Storage m ²	Total m ²
201	2	68	12	-	2	82
202	2	65	12	-	2	79
203	2	65	13	-	2	80

SECOND FLOOR



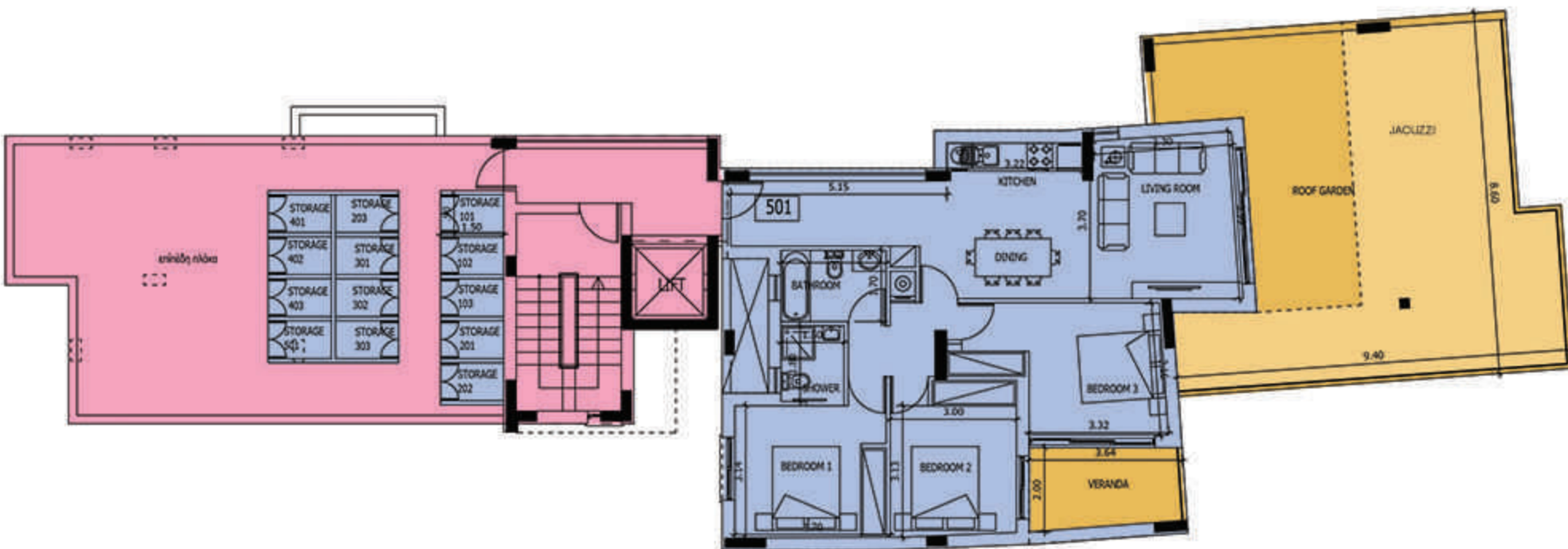
Apartment	No of bedrooms	Area m ²	Covered verandas m ²	Uncovered verandas m ²	Storage m ²	Total m ²
301	2	68	12	-	2	82
302	2	65	12	-	2	79
303	2	65	13	-	2	80

THIRD FLOOR



Apartment	No of bedrooms	Area m ²	Covered verandas m ²	Uncovered verandas m ²	Storage m ²	Total m ²
401	2	68	12	-	2	82
402	2	65	12	-	2	79
403	2	65	13	-	2	80

FOURTH FLOOR



Apartment	No of bedrooms	Area m ²	Covered verandas m ²	Uncovered verandas m ²	Storage m ²	Total m ²
501	3	99	30	46	2	177

FIFTH FLOOR - ROOF GARDEN



GADALLA
DEVELOPERS

Egypt: 0020 2 2541 2502 (Landline) 0020 10 1832 0003 (Mobile) Lebanon: 00961 3 888 202 (Mobile)

Cyprus: 00357 23020300 (Office) 00357 96453913 (Mobile) 00357 96555090

george.pantou@ipc-international.com

IN ASSOCIATION WITH
IPC INTERNATIONAL

